



Microsoft

Exam Questions 70-247

Private Cloud Configuration and Deployment with System Center 2012

Version: Demo

1. Your company has three datacenters located in New York, Los Angeles and Paris.

You deploy a System Center 2012 Virtual Machine Manager (VMM) infrastructure. The VMM infrastructure contains 2,000 virtual machines deployed on 200 Hyper-V hosts.

The network contains a server named DPMS that has System Center 2012 Data Protection Manager (DPM) installed.

You need to recommend a solution for the infrastructure to meet the following requirements:

. Automatically backup and restore virtual machines by using workflows.

. Automatically backup and restore system states by using workflows.

What should you include in the recommendation? (Each correct answer presents part of the solution. Choose two.)

A. Deploy System Center 2012 Orchestrator.

B. Install the Integration Pack for System Center Virtual Machine Manager (VMM).

C. Install the Integration Pack for System Center Data Protection Manager (DPM).

D. Deploy System Center 2012 Operations Manager.

E. Deploy System Center 2012 Service Manager.

Answer: A,C

Explanation:

<http://technet.microsoft.com/en-us/library/hh420337> <http://technet.microsoft.com/en-us/library/hh830726.aspx>

2. Your network contains an Active Directory domain named contoso.com. The domain contains two member servers named Server1 and Server2 that run Windows Server 2012 R2. Server1 has System Center 2012 R2 Virtual Machine Manager (VMM) installed. Server2 has the IP Address Management (IPAM) feature installed.

You need to ensure that address spaces created in VMM are visible in IPAM.

What should you do?

A. From Windows PowerShell, run the Add-SCNetworkConnectioncmdlet.

B. From the Virtual Machine Manager console, configure the System Center Settings.

C. From Windows PowerShell, run the Add-SCNetworkService cmdlet.

D. From the Virtual Machine Manager console, create a service.

Answer: C

Explanation:

Note: In VMM, network services include gateways, virtual switch extensions, network managers (which include IPAM servers), and top-of-rack (TOR) switches

3. DRAG DROP

Your network contains an Active Directory domain named adatum.com.

You plan to install System Center 2012 Virtual Machine Manager (VMM) on a server in the domain.

You create a failover cluster that contains two nodes named Node1 and Node2.

You configure an account named adatum\scvmm as the service account for VMM.

You start installing VMM 2012 on Node1.

You need to ensure that the encryption keys used by VMM are available on Node1 and Node2.

Which three actions should you perform in sequence? (To answer, move the appropriate actions from the list of actions to the answer area and arrange them in the correct order.)

Actions	Answer area
Create a folder named Data1 on each node.	
Click the Local key management option during the setup of VMM.	
Assign the Read permissions to adatum\scvmm on Data1.	
Click the Distributed key management option during the setup of VMM.	
Create a container in adatum.com named SCVMM1.	
Assign the Read, Write, Create All Child objects permissions to contoso\scvmm on SCVMM1.	

Answer:

Actions	Answer area
Create a folder named Data1 on each node.	Create a container in adatum.com named SCVMM1.
Click the Local key management option during the setup of VMM.	Assign the Read, Write, Create All Child objects permissions to contoso\scvmm on SCVMM1.
Assign the Read permissions to adatum\scvmm on Data1.	Click the Distributed key management option during the setup of VMM.
Click the Distributed key management option during the setup of VMM.	
Create a container in adatum.com named SCVMM1.	
Assign the Read, Write, Create All Child objects permissions to contoso\scvmm on SCVMM1.	

4. Your company has a private cloud that is managed by a System Center 2012 Virtual Machine Manager (VMM) infrastructure. The infrastructure contains a server named Server1 that has VMM installed.

You plan to deploy the Hyper-V server role to a server named Server2. Server2 runs Windows Server 2008 R2. Server2 is member of a workgroup.

You need to add Server2 to the VMM fabric.

What should you do? (Each correct answer presents part of the solution. Choose three.)

- A. From the VMM Administrator Console, run the Add Resource Wizard, and then click Windows Server computers in a perimeter network.
- B. From the VMM 2012 installation media, install the VMM agent on Server2.
- C. From the VMM Administrator Console, run the Add Resource Wizard, and then click Windows Server computer in an untrusted Active Directory domain.
- D. Copy the SecurityFile.txt file from Server2 to Server1.
- E. From the Services console on Server1, start the SSDP Discovery service.
- F. Copy the ApplicationHost.config file from Server2 to Server1.

Answer: A,B,D

5. You are creating a Server Application Virtualization (Server App-V) package named Package1 of an application named Appl. Package1 will be included in a System Center 2012 R2 Virtual Machine Manager (VMM) service template.

You need to configure Package1 to ensure that you can modify the settings of App1 from the properties of the service template.

What should you do?

- A. From the Server App-V Sequencer, click Add Deployment Configuration Item.

- B. Modify the SFT file of Package1.
- C. From the Server App-V Sequencer, configure the Properties of the package.
- D. Modify the Open Software Description (OSD) file of Package1.

Answer: A

6. Your network contains a server named Server1 that has System Center 2012 Virtual Machine Manager (VMM) installed.

You plan to deploy a service named Service1. Service1 will contain three tiers. Each tier will contain 10 instances.

You need to configure the service template to ensure that when an application in Service1 is upgraded, Service1 remains available.

What should you configure for each tier?

- A. The maximum instance count
- B. The preferred servicing order
- C. The number of upgrade domains
- D. The minimum instance count
- E. The preferred deployment order

Answer: C

Explanation: To minimize service interruptions when a tier is updated in-place, you can specify more than one upgrade domain in the tier properties. When the tier is updated, VMM updates the virtual machines in the tier according to the upgrade domain to which they belong. VMM upgrades one upgrade domain at a time, shutting down the virtual machines running within the upgrade domain, updating them, bringing them back online, and then moving on to the next upgrade domain. By shutting down only the virtual machines running within the current upgrade domain, VMM ensures that an upgrade takes place with the least possible impact to the running service.

URL: <http://technet.microsoft.com/en-us/library/gg675089.aspx>

7. You have a System Center 2012 Service Manager infrastructure that contains a single server named SCSM1.

You plan to use a new account named Account1 as the Operational Database Account. You plan to configure SCSM1 to use Account1 as the logon account for the System Center Data Access Service.

You need to identify which roles must be assigned to Account1.

Which two roles should you identify? (Each correct answer presents part of the solution. Choose two.)

- A. the Service Manager Administrators User Role Profile
- B. the Microsoft SQL Server db_ddladmin fixed database role
- C. the Service Manager Workflows User Role Profile
- D. the Service Manager Advanced Operators User Role Profile
- E. the Microsoft SQL Server configsvc_users database role
- F. the Microsoft SQL Server sdk_users database role

Answer: A,F

Explanation:

<http://technet.microsoft.com/en-us/library/hh495527.aspx> suggests that A, E and F are required (Service Manager Administrators User Role Profile, configsvc_users database role and sdk_users database role) but the question is asking for just two answers.

<http://technet.microsoft.com/en-us/library/hh495527.aspx> doesn't mention the configsvc_users database role as below so the answer is A and F.

System Center Configuration service and System Center Data Access service account: This account is one set of credentials that is used to update and read information in the operational database. Operations Manager ensures that the credentials used for the System Center Data Access service and System Center Configuration service account are assigned to the sdk_user role in the operational database.

8. You are the datacenter administrator for a company named Contoso, Ltd.

The network contains a server that has System Center 2012 Virtual Machine Manager (VMM) installed.

You create four private clouds.

Developers at Contoso have two Windows Azure subscriptions.

Contoso creates a partnership with another company named A.Datum.

The A.Datum network contains a System Center 2012 Virtual Machine Manager (VMM) infrastructure that contains three clouds.

Developers at A.Datum have two Windows Azure subscriptions.

You deploy System Center 2012 App Controller at A.Datum.

You plan to manage the clouds and the Windows Azure subscriptions for both companies from the App Controller portal.

You need to identify the minimum number of subscriptions and the minimum number connections required for

the planned management.

How many connections and subscriptions should you identify?

- A. Two connections and four subscriptions
- B. Two connections and two subscriptions
- C. Four connections and four subscriptions
- D. Eight connections and four subscriptions
- E. Four connections and two subscriptions

Answer: A

Explanation:

"Contoso has four clouds."

Connecting to a private cloud means establishing a connection to a VMM 2012 Management Server. However, you can also add a Windows Azure subscription to App Controller. Before anyone can use App Controller, an administrator must configure it to communicate with VMM for private clouds, or Windows Azure for public cloud services.

Connecting App Controller to VMM is straightforward.

Connecting (or subscribing) App Controller to an Azure subscription requires a little more work.

One of the coolest features of App Controller is its support for multiple connections and subscriptions. If for business reasons you implement different VMM deployments, you can connect App Controller to each deployment. Similarly, if you have multiple subscriptions to the Microsoft Azure service, you can add them to App Controller.

<http://blogs.technet.com/b/server-cloud/archive/2011/10/28/app-controller-enabling-application-self-service.aspx> <http://www.windowsitpro.com/article/system-center/microsoft-system-center-app-controller-2012-142925> <http://technet.microsoft.com/en-us/library/gg696038>

9. DRAG DROP

Your network contains an Active Directory forest named contoso.com. The forest contains a server farm that has Microsoft SharePoint Server 2010 installed.

You deploy System Center 2012 R2 Operations Manager. You deploy the Microsoft Monitoring Agent to all of the servers on the network.

You need to ensure that you can publish Operations Manager dashboards to a SharePoint site.

You copy the required files to SharePoint Server.

Which three actions should you perform in sequence? To answer, move the appropriate actions from the list

of actions to the answer area and arrange them in the correct order.

Actions	Answer Area
Configure the Operations Manager web console environment.	
Import the System Center SharePoint Management Pack for SharePoint Server in Operations Manager.	
Install the Microsoft.EnterpriseManagement.SharePointIntegration.wsp solution package.	
Activate the Operations Manager dashboard Web Part.	
Install the Operations Manager console on the front-end SharePoint servers.	

Answer:

Actions	Answer Area
Configure the Operations Manager web console environment.	Install the Microsoft.EnterpriseManagement.SharePointIntegration.wsp solution package.
Import the System Center SharePoint Management Pack for SharePoint Server in Operations Manager.	Activate the Operations Manager dashboard Web Part.
Install the Microsoft.EnterpriseManagement.SharePointIntegration.wsp solution package.	Configure the Operations Manager web console environment.
Activate the Operations Manager dashboard Web Part.	
Install the Operations Manager console on the front-end SharePoint servers.	

10. You have a deployment of System Center 2012 R2 Virtual Machine Manager (VMM).

You need to configure a profile that installs the Web Server (IIS) server role during the deployment of a virtual machine.

Which profile should you configure?

- A. Guest OS
- B. Advanced Operator

- C. Capability
- D. Physical Computer

Answer: A

11. You plan to deploy a System Center 2012 infrastructure.

You plan to create and deploy a service named Service1.

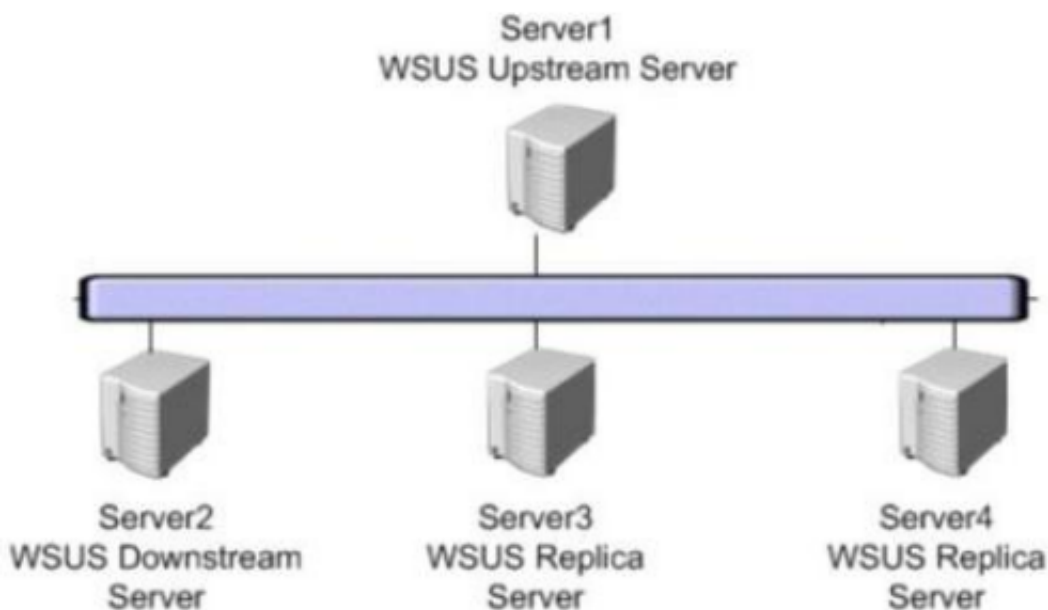
You need to recommend a solution to deploy Service1 to a private cloud and a Windows Azure subscription.

What should you include in the recommendation?

- A. System Center 2012 Service Manager
- B. System Center 2012 Virtual Machine Manager (VMM)
- C. The Virtual Machine Manager Self-Service Portal (VMMSSP) 2.0
- D. System Center 2012 App Controller

Answer: D

12. Your company has a private cloud that contains a Windows Server Update Services (WSUS) infrastructure as shown in the exhibit. (Click the Exhibit button.)



You plan to add the WSUS infrastructure to the System Center 2012 Virtual Machine Manager (VMM) infrastructure.

You need to identify which WSUS servers can be added to the VMM infrastructure.

Which server or servers should you identify? (Each correct answer presents part of the solution. Choose all that apply.)

- A. Server1
- B. Server2
- C. Server3
- D. Server4

Answer: A,B

Thank You for Trying Our Product

We offer two products:

1st - We have Practice Tests Software with Actual Exam Questions

2nd - Questions and Answers in PDF Format

70-247 Practice Exam Features:

- * 70-247 Questions and Answers Updated Frequently
- * 70-247 Practice Questions Verified by Expert Senior Certified Staff
- * 70-247 Most Realistic Questions that Guarantee you a Pass on Your First Try
- * 70-247 Practice Test Questions in Multiple Choice Formats and Updates for 1 Year

100% Actual & Verified — Instant Download, Please Click
[Order The 70-247 Practice Test Here](#)